

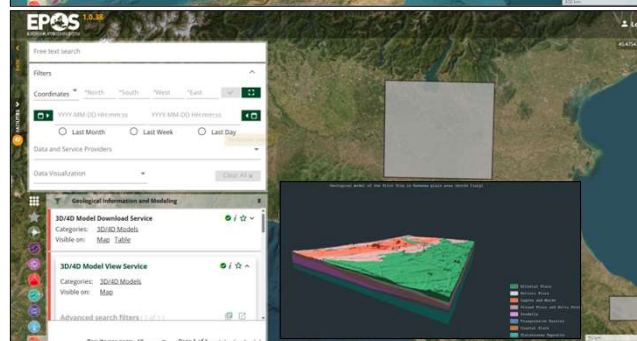
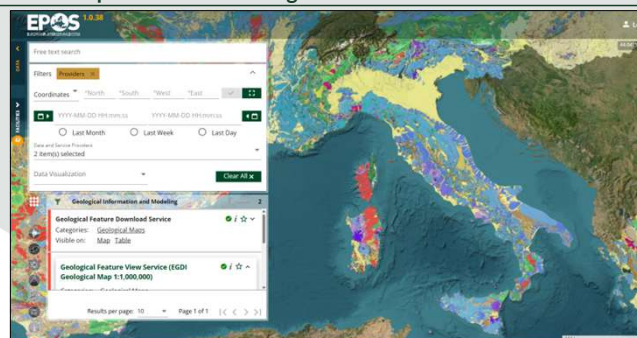
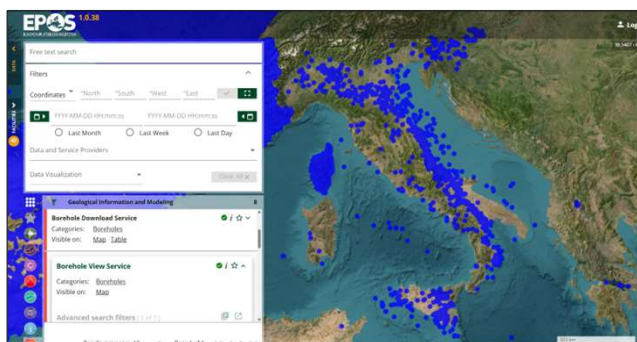
Geological information for the Italian Inventory of Geosites

Primerano Paolo* (paolo.primerano@isprambiente.it)

ISPRA - Istituto Superiore per la Protezione e la Ricerca Ambientale. Dipartimento per il Servizio Geologico d'Italia.

Datasets brought by ISPRA to TCS GIM data services:

- Geological map at 1:1M scale;
- Boreholes:
 - deep (oil exploration)
 - shallow (geothermal resources exploration);
- 3D Geological models.



Geoscientific Research is supported by Public Service data collection, capitalisation, curation and regional/national inventories.



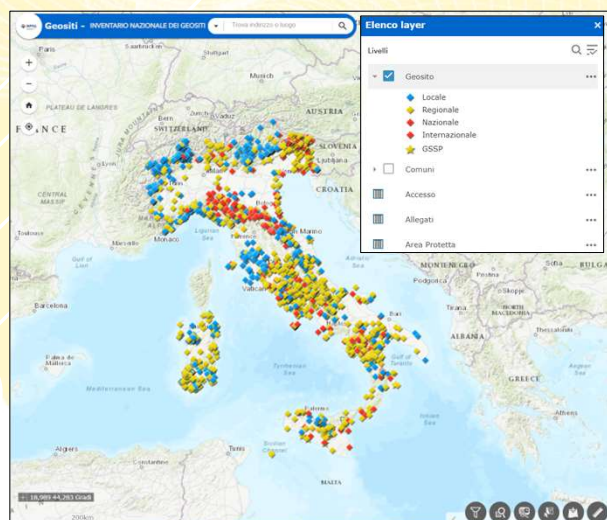
ISPRA (Italian Institute for Environmental Protection and Research) is an Italian public institute focused on environmental protection, research, and natural resource management. It provides technical support to the government and local authorities.

The **Geological Survey of Italy**, established in 1873, its primary mission was to create and publish the Geological Map of Italy. Nowadays, the Department is responsible for the collection, management, and publication of geological data at the national level across all Earth sciences sectors.

The **Italian Geosites Inventory** is a public access database to consult places where it is possible to appreciate geological characteristics.

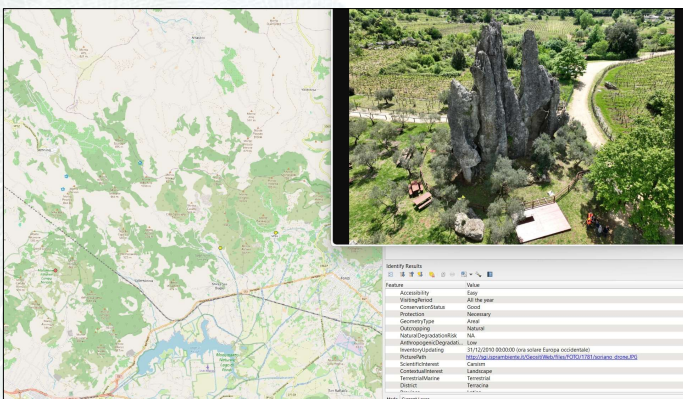
Since the early 2000s, the Italian peninsula **geoheritage** has been catalogued to promote the **conservation** and the **dissemination of geological knowledge**. The Italian geological heritage holds a great **scientific, environmental, cultural, and tourist-recreational** value.

An interactive map is available in the Inventory for searching information about approximately **3,000 geosites** registered across the national territory. The number is continuously updated as the work proceeds simultaneously with:



• the addition of new geosites;

• the revision and if necessary, the elimination of geosites already present in the database, or outdated.



SCAN ME TO EXPLORE THE ITALIAN GEOSITES INVENTORY!

Geosites are essential to the development of geological sciences, because **geology** is based not only on archival documents and printed material, but also on places, outcrops and landscapes.